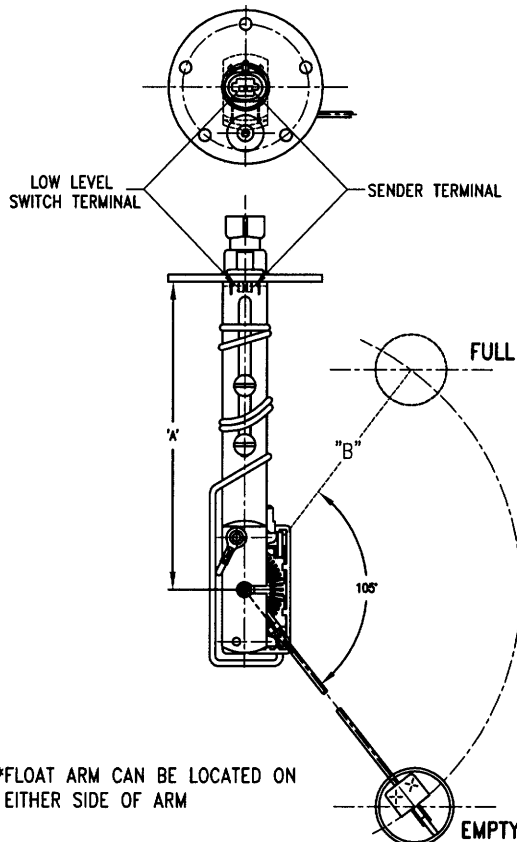


INSTALLATION INSTRUCTIONS

392 SERIES WITH LOW LEVEL WARNING SWITCH

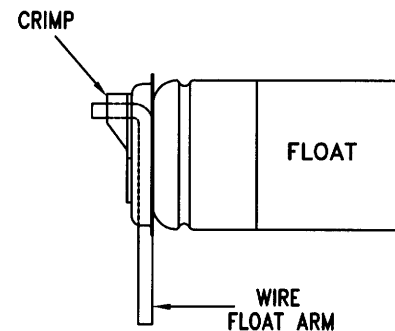


TANK DEPTH	'A' LENGTH	'B' LENGTH
10.00	5.19	5.44
10.50	5.44	5.75
11.00	5.69	6.06
11.50	5.94	6.37
12.00	6.19	6.69
12.50	6.44	7.00
13.00	6.69	7.31
13.50	6.94	7.63
14.00	7.19	7.94
14.50	7.44	8.25
15.00	7.69	8.56
15.50	7.94	8.75
16.00	8.19	9.13
16.50	8.44	9.44
17.00	8.69	9.75

TANK DEPTH	'A' LENGTH	'B' LENGTH
17.50	8.94	10.06
18.00	9.19	10.37
18.50	9.44	10.69
19.00	9.69	11.00
19.50	9.94	11.37
20.00	10.19	11.69
20.50	10.44	12.00
21.00	10.69	12.25
21.50	10.94	12.63
22.00	11.19	12.94
22.50	11.44	13.25
23.00	11.69	13.56
23.50	11.94	13.87
24.00	12.19	14.19

ARM ADJUSTMENT

Determine float arm length required for tank depth and cut float arm wire to cut length shown on table. Insert wire float arm into clip on top of float. Bend protruding wire at a point 9/16" from end of wire at a 90 degree angle in the opposite direction of the float position. Pull wire back into position on float and crimp the parallel portion of clip to secure the assembly.



CAUTION

Use extreme caution when working around fuel. Work in well ventilated area and keep all hot materials away. Consult vehicle service manual if fuel tank must be removed.

CAUTION

A new gasket must be placed between the flange of the sender and the flange of the tank during final installation.