



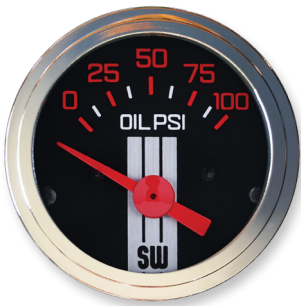
MUSCLE SERIES GAUGE

FLEX SOME MUSCLE

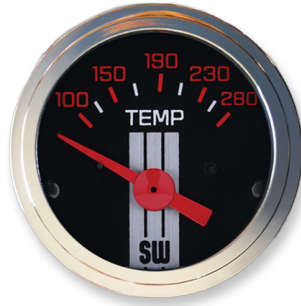
Designed for the baddest of both vintage and modern muscle cars, our Muscle gauge line features a sleek, brushed aluminum finish, brilliant backlit graphics, retro red pointers, and chrome bezels. Whether on the street or strip, Muscle gauges are ready for whatever your street beast will throw at them—and look good while doing it, too.



838438



838437



838439



838436



838418

MUSCLE

TYPE	RANGE	SIZE	ELEC	NOTES/ADDITIONAL KITS NEEDED
Fuel Level	E-1/2-F	2-1/16"	838418	Fuel Level Sender (240-33.5 Ω) SW Match
Voltmeter	10-16V	2-1/16"	838436	
Oil Pressure	0-100 PSI	2-1/16"	838437	Pressure Sender 279B-F
Speedometer	0-160 MPH	3-3/8"	838438	988P GPS or 82623B Hall Effect Senders Recommended
Water Temperature	100-280°F	2-1/16"	838439	Temp Sender 280ED-F
Tachometer	0-8,000 RPM	3-3/8"	838440	Tach Adaptor May Be Required w/ Aftermarket Ignition

MUSCLE KITS

838447	5-Gauge Kit	Includes: Electric speedometer, oil pressure gauge, water temperature gauge, fuel level gauge, and voltmeter; Electrical senders, light kits, mounting hardware, and installation instructions.
--------	-------------	---



838447

5-Gauge Kit

3-3/8" 160 mph Speedometer, 2-1/16" Voltmeter, Oil Pressure, Water Temperature, & Fuel Level

Learn more about the Muscle Series Gauge and other Stewart-Warner products by visiting stewartwarner.com or email us at info@stewartwarner.com.



stewartwarner.com

Follow us:



© 2022 Stewart-Warner, all rights reserved.